

This manual should be read carefully in order to provide the information necessary for correct installation and maintenance of Stick&Stone stone panels.

### EQUIPMENT

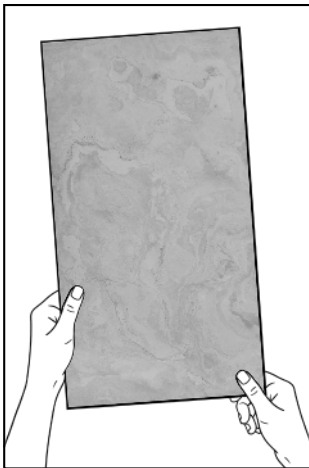
- Ruler or measuring tape
- Pair of scissors
- Peiting tape
- Natural Stone Basic Cleaner\*
- Clean cloth

\* Products that you can find on our website : [www.stoneleaf.fr](http://www.stoneleaf.fr)

**ADVICE:** Allow 10% margin on the necessary quantity of stone panels to achieve the desired outcome.

## 1. PREPARATION

LEAVE THE PANELS LYING FLAT



### I PRECAUTIONS

Boxes should be stored in a clean and dry environment. Do not throw away the packaging before final installation.

To optimize the good adhesion of Stick & Stone panels, make sure that the surface intended for installation is dry and dust-free.

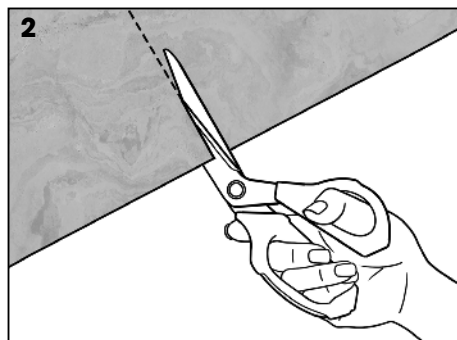
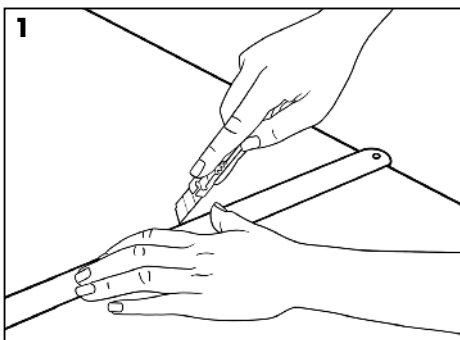
### I RECOMMENDED INSTALLATION TEMPERATURE



We recommend a temperature between 10°C and 30°C for an optimal installation of the Stick&Stone stone panel.

## 2. CUTTING THE PANEL

STICK&STONE IS EASY TO WORK WITH



1. Trace an outline for the cutting line on the adhesive side.
2. Use a pair of scissors to cut.

**N.B.** Cut on the stone side so as to avoid splinters.

## I CUTTING FOR ROUNDED EDGES

To cut circular panels or around outlets :

1. Measure the area.
2. Protect the stone with painting tape and mark the cutting line on the stone side.
3. Use a hole saw.

For more precise cuts and/or rounded edges :

Use a precision knife or jigsaw fitted with a fine-tooth blade if necessary.

---

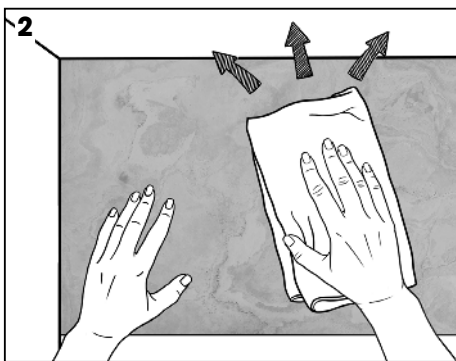
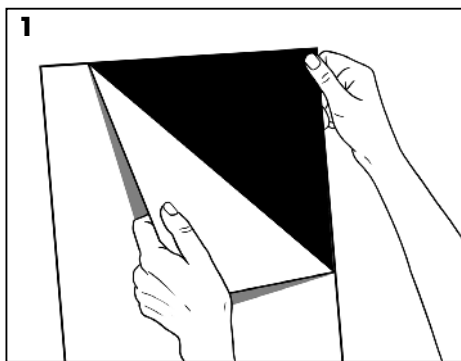
## 3. INSTALLATION

---



Warning : Stick & Stone tolerates contact with water but not for continuous use.  
The installation surface must be flat, clean, and dry.

### I INSTALLATION



1. Remove the protective film from the adhesive.
2. Place the Stick & Stone panel on the surface then, using a clean cloth, press & smooth out the entire surface to expel any air bubbles.

**GOOD TO KNOW :** To reposition or replace an already adhered Stick & Stone product: heat the panel with a heat gun (or hair dryer) to relax the adhesive and then manipulate the panel as needed.

---

## 4. PROTECTION

---

The Stick & Stone is water repellent when it leaves the factory. The stone surface is waterproofed and does not require additional treatment upon purchase or over time.

---

## 5. MAINTENANCE

---



### I MAINTENANCE

Use our Natural Stone Basic cleaner for natural stone

1. Spray evenly onto the stone panel.
2. Clean the surface with a clean, absorbent cloth.



Never use **abrasive products**, wax or vanish.