

# STONELEAF CLASSIC

## Installation protocol

This manual should be read carefully in order to provide the information necessary for correct installation and maintenance of StoneLeaf Classic stone panels.

### Equipment

- Torch or heat gun
- Painting tape
- Ruler or measuring tape
- Piece of cloth
- Pencil
- Circular saw
- Carbide blade
- Hole saw
- Jigsaw
- Eccentric sander
- Fix ALL High Tack Glue\*
- Cartridge gun
- NANO Waterproof Anti-Stain product\*
- Swipex Cleaning wipes\*
- Basic Natural Stone Cleaner\*

### Installation on furniture

- Neoprene glue

### Installation in humid areas

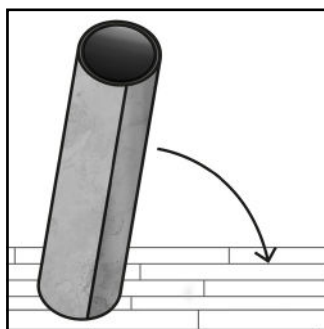
- Silicone wedge
- Silicone joint\* (large color chart)
- Roller
- Bonding primer or sealing resin

\* Products that you can find on our website : [www.stoneleaf.fr](http://www.stoneleaf.fr)

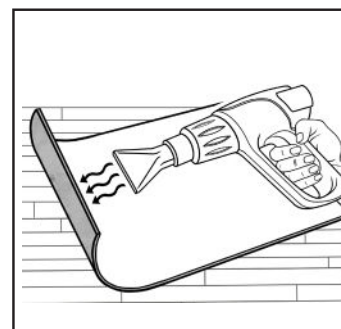
**ADVICE:** Allow 10% margin on the necessary quantity of stone panels to achieve the desired outcome.

## 1. Preparation

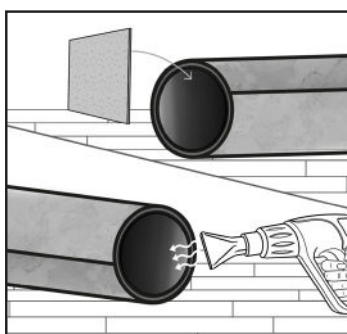
Lay the panels flat (For panels that were shipped rolled up)



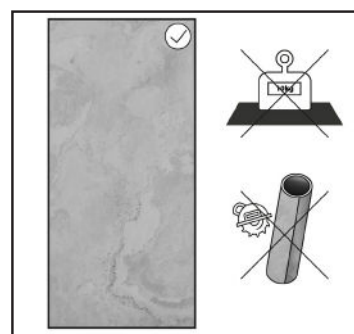
**1.** Once the plastic wrapping is gently opened, place your stone sheet on the ground.



**3.** In order to optimally relax the resin, place a cardboard support at one end and heat with a thermal stripper the inside of the roll at the other end. Let it heat for 3 min.



**2.** Let the sheet relax and continue to heat it flat on the resin side. Before proceeding with the cutting and installation, the stone sheet must be completely flat.



**4.** Once the stone sheet is flattened, make your cuts if necessary. **Caution,** do not put heavy weights on the stone sheet and do not cut it while it is in the form of a roll

## I PRECAUTIONS

Boxes should be stored in a clean and dry environment. Do not throw away the packaging before final installation.



Do not work the panel without having flattened it to avoid any risk of cracking.  
It is possible that small layers of stone start to peel off. You just need to remove them with a piece of cloth.  
This will not damage the stone.

---

## Preparing the surface

### I TAKE MEASUREMENTS

Measure the backing before cutting out the stone panels.

### I RECOMMENDED INSTALLATION TEMPERATURE



We recommend a temperature between 10°C and 30°C for an optimal installation of the stone panel.

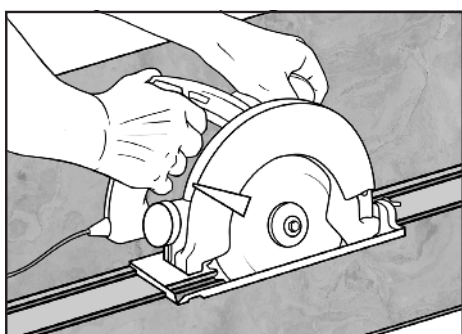


The surface intended for installation must be flat, clean, and dry.

**GOOD TO KNOW :** We recommended you protect the edges of the stone side of the panel with painting tape to prevent the glue from penetrating into the stone.

## 2. Cutting the panel

Cutting a StoneLeaf panel works like cutting a laminate



Beforehand, mark the cutting line with a pencil on painting tape on the stone side.  
Cut using a circular saw fitted with a carbide blade or a diamond disc. Use a guide.



Cut on the stone side to keep the panel from splintering.

### I CUTTING FOR ROUNDED EDGES

**To cut circular panels or around outlets :**

1. Measure the area.
2. Protect the stone with painting tape and mark the cutting line on the stone side.
3. Use a hole saw.

**For more precise cuts and/or rounded edges:**

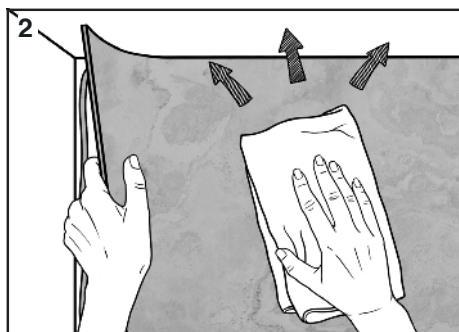
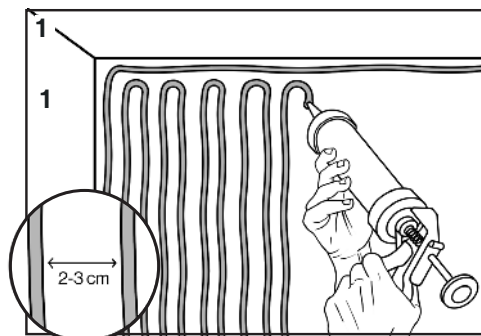
Use a precision knife or jigsaw fitted with a fine-tooth blade if necessary.

### 3. Installation on a surface

#### I INSTALLATION IN HUMID AREAS

Installation on BA13 Hydro : use a roller to apply a sealant to the surface before installation.  
Installation on tiles/earthenware : use a roller to apply a primer to the surface.

#### Dry & Humid Areas



**1.** Cut the cartridge at the second nozzle and then apply Fix ALL High Tack glue in tight cords. Mark a perimeter the size of the cut panel to ensure a seal at the joints.

*The glue consumption is at least about 1 tube per Sqm.*

**2.** Position the panel. Using a clean cloth adjust and then smooth out the entire surface to allow adhesion to the glue.

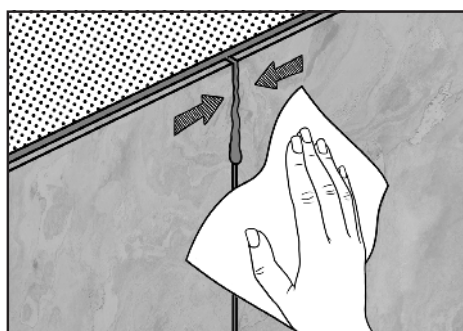
#### Furniture, Wood & MDF

In dry areas

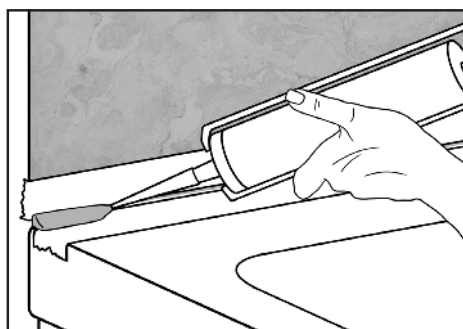
For installation on wood, MDF, or furniture in a dry environment: use neoprene glue.

**1.** Glue the two surfaces (starting with the edgebanding) using neoprene or spray glue.

### 4. Sealing



The glue provides a seal between two panels, edge to edge. Squeeze the sheets to bring out the glue and create a seal. Clean the excess glue from the joints using Swipex cleaning wipes.

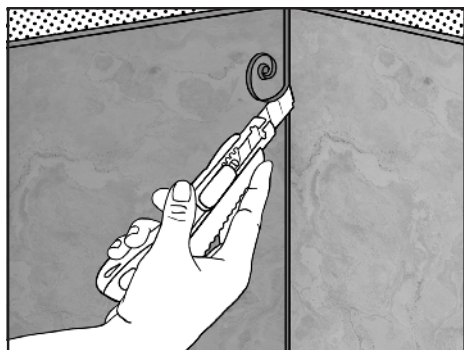


#### For interior corners:

**1.** Apply the silicone sealant (wide choice of colors available on [www.stoneleaf.fr](http://www.stoneleaf.fr)) on the painting tape over the entire length. Then smooth it out with a wedge.

**2.** Remove the painting tape once the panel is completely smooth.

## 5. Finish

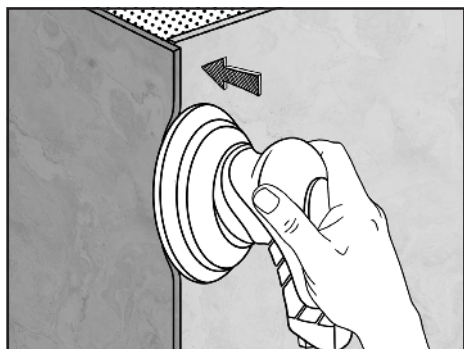


### I FOR INTERIOR ANGLES

As the layers of stone are not necessarily straight, it is recommended to lay a first panels and then adjust the second.  
Remove excess glue with a sharp blade.



In humid areas, it is necessary to apply a silicone sealant (you will find a wide choice of colors available on [www.stoneleaf.fr](http://www.stoneleaf.fr))



### I FOR EXTERIOR ANGLES

Let the stone panel protrude a few mm. Remove the glue that overflows and then adjust, after drying, using an eccentric or vibrating sander equipped with a 120 grit. It is also possible to use a trimming machine equipped with a carbide burr for the treatment of exterior angles.



Warning: due to the thinness of the panel, sanding should be brief.

## 6. Protection



Dampen a dry cloth with Akemi water repellent product and protect the stone evenly.  
The water repellent will remove excess glue at the same time (within 10 minutes after installation).  
20 minutes later : remove the excess product with a clean cloth.



**In humid and outdoor environments :** Apply a second coat directly after the first coat for maximum protection. The application of water repellent does not change the color of the stone.

## 7. Maintenance

Use Natural Stone Basic cleaner for natural stone

1. Spray evenly onto the stone panel.
2. Clean the surface with a clean, absorbent cloth.



Never use **abrasive products**, wax or vanish.