

STONELEAF TRANSLUCENT

Installation protocol

Trans **Lucide**®

This manual should be read carefully in order to provide the information necessary for correct installation and maintenance of StoneLeaf Translucent panels.

Equipment

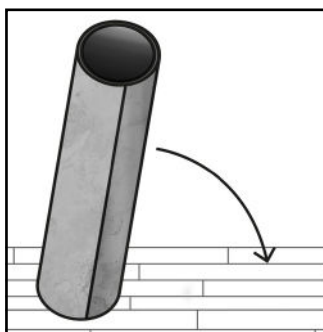
- Torch or heat gun
- Painting tape
- Ruler or measuring tape
- Piece of cloth
- Pencil
- Circular saw
- Carbide blade
- Hole saw
- Jigsaw
- Eccentric sander
- Fix ALL Crystal Glue*
- Flat or finely notched spatula
- Cartridge gun
- NANO Waterproof Anti-Stain product*
- Swipex Cleaning wipes*
- Basic Natural Stone Cleaner*
- Light-diffusing plexiglass
- LED curtain

* Products that you can find on our website : www.stoneleaf.fr

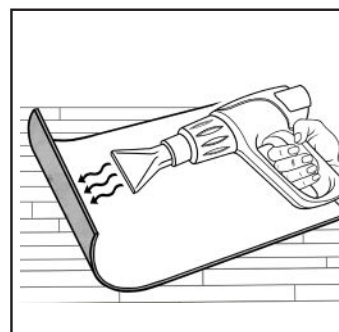
ADVICE : Allow 10% margin on the necessary quantity of stone panels to achieve the desired outcome.

1. Preparation

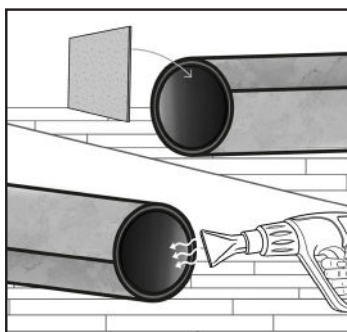
Lay the panels flat (For panels that were shipped rolled up)



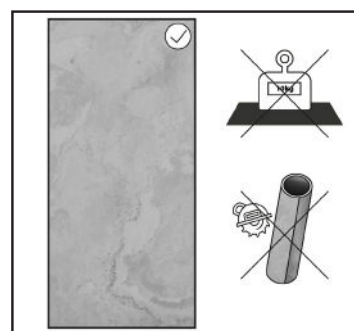
1. Once the plastic wrapping is gently opened, place your stone sheet on the ground.



3. In order to optimally relax the resin, place a cardboard support at one end and heat with a thermal stripper the inside of the roll at the other end. Let it heat for 3 min.



2. Let the sheet relax and continue to heat it flat on the resin side. Before proceeding with the cutting and installation, the stone sheet must be completely flat.



4. Once the stone sheet is flattened, make your cuts if necessary. **Caution,** do not put heavy weights on the stone sheet and do not cut it while it is in the form of a roll

I PRECAUTIONS

Boxes should be stored in a clean and dry environment. Do not throw away the packaging before final installation.



Do not work the panel without having flattened it to avoid any risk of cracking.
It is possible that small layers of stone start to peel off. You just need to remove them with a piece of cloth.
This will not damage the stone.

Preparing the surface

I TAKE MEASUREMENTS

Measure the backing before cutting out the stone panels.

I RECOMMENDED INSTALLATION TEMPERATURE



We recommend a temperature between 10°C and 30°C for an optimal installation of the stone panel.

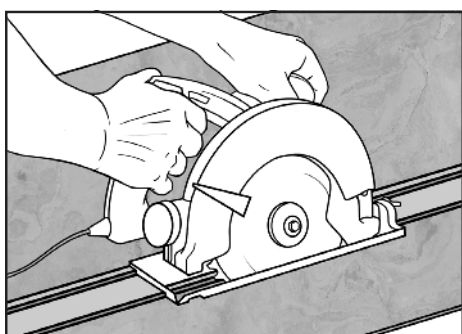


The surface intended for installation must be flat, clean, and dry.

GOOD TO KNOW : We recommended you protect the edges of the stone side of the panel with painting tape to prevent the glue from penetrating into the stone.

2. Cutting the panel

Cutting a StoneLeaf panel works like cutting a laminate



Beforehand, mark the cutting line with a pencil on painting tape on the stone side.
Cut using a circular saw fitted with a carbide blade or a diamond disc. Use a guide.



Cut on the stone side to keep the panel from splintering.

I CUTTING FOR ROUNDED EDGES

To cut circular panels or around outlets :


1. Measure the area.
2. Protect the stone with painting tape and mark the cutting line on the stone side.
3. Use a hole saw.

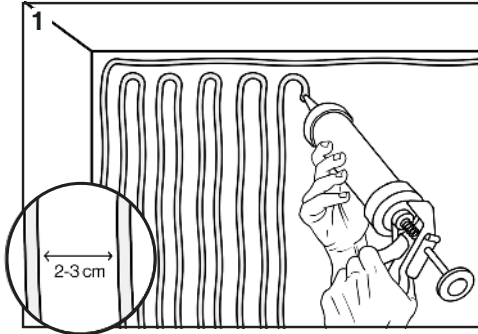
For more precise cuts and/or rounded edges :

Use a precision knife or jigsaw fitted with a fine-tooth blade if necessary.

3. Installation on a surface

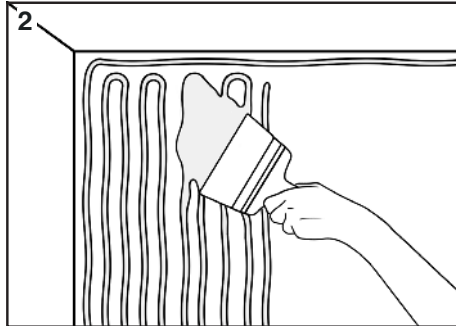
StoneLeaf Translucent stone panels have the particularity of allowing light to pass through. They are therefore placed on a transparent backing such as **glass** or **light-diffusing plexiglass**. Your surface must be rigid; we recommend a minimum of 8-10 mm thickness depending on your application.

 For the illumination of the translucent stone panel, it is advisable to place an LED lighting system behind the surface. Make sure there is a minimum of 5 cm between your surface and your LED curtain to ensure diffused lighting.




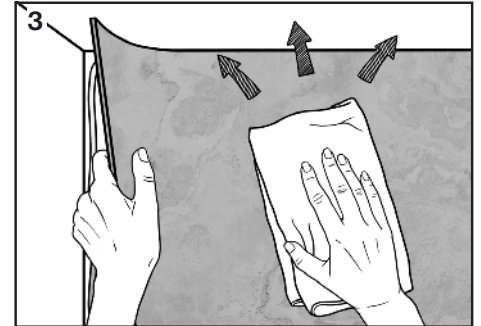
1. Cut the cartridge at the second nozzle and then apply Fix ALL Crystal glue in tight cords. Mark a perimeter the size of the cut panel to ensure a seal at the joints.

The glue consumption is at least about 1 tube per Sqm.



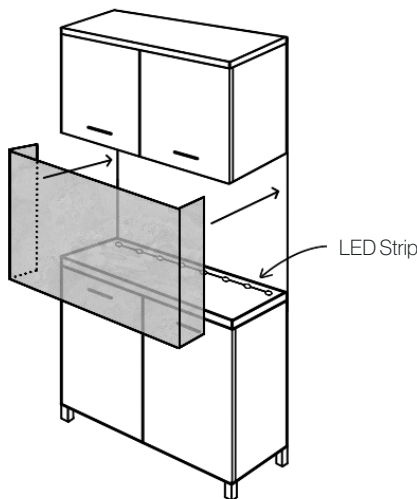
2. Spread the glue on the support with a flat, non-serrated spatula.

 It is important to spread the glue beads well so that they are not seen through the foil during final lighting and to obtain the best possible result.



3. Position the panel. Using a clean cloth adjust and then smooth out the entire surface to allow adhesion to the glue.

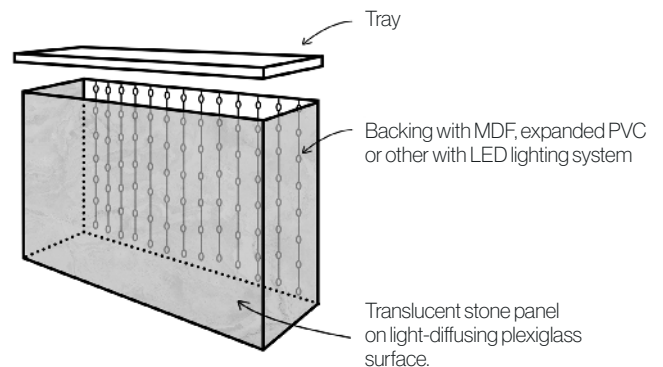
I INSTALLATION ON SPLASHBACKS




For lighting, place LED strip or pellets on the worktop.

 For this application, it is essential to have high walls so that the light is reflected and provides diffused lighting.

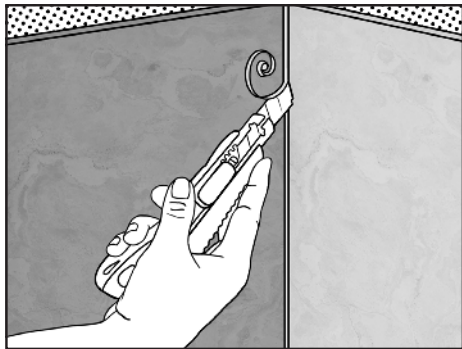
I INSTALLATION ON BAR OR WALL FORMWORK



For an application on a bar or in wall formwork, place the lighting on the rear side using an LED curtain, for example. Place the translucent stone panel on the other 3 transparent sides.

 The lighting system must cover the entire rear side to avoid any light demarcation. We recommend using light-diffusing plexiglass for the same reason: to ensure diffused lighting.

4. Finish

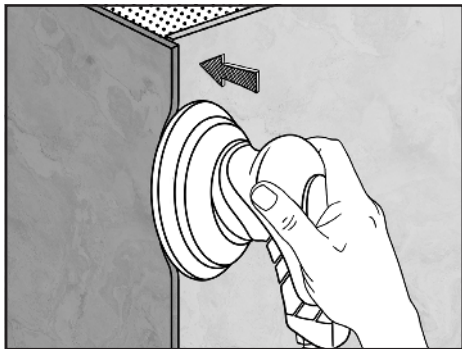


I FOR INTERIOR ANGLES

As the layers of stone are not necessarily straight, it is recommended to lay a first panels and then adjust the second.
Remove excess glue with a sharp blade.



In humid areas, it is necessary to apply a silicone sealant (you will find a wide choice of colors available on www.stoneleaf.fr)



I FOR EXTERIOR ANGLES

Let the stone panel protrude a few mm. Remove the glue that overflows and then adjust, after drying, using an eccentric or vibrating sander equipped with a 120 grit. It is also possible to use a trimming machine equipped with a carbide burr for the treatment of exterior angles



Warning : due to the thinness of the panel, sanding should be brief.

5. Protection



Dampen a dry cloth with Akemi water repellent product and protect the stone evenly. The water repellent will remove excess glue at the same time (within 10 minutes after installation).
20 minutes later : remove the excess product with a clean cloth.



In humid and outdoor environments : Apply a second coat directly after the first coat for maximum protection.
The application of water repellent does not change the color of the stone.

6. Maintenance

Use Natural Stone Basic cleaner for natural stone

1. Spray evenly onto the stone panel.
2. Clean the surface with a clean, absorbent cloth.



Never use **abrasive products**, wax or vanish..